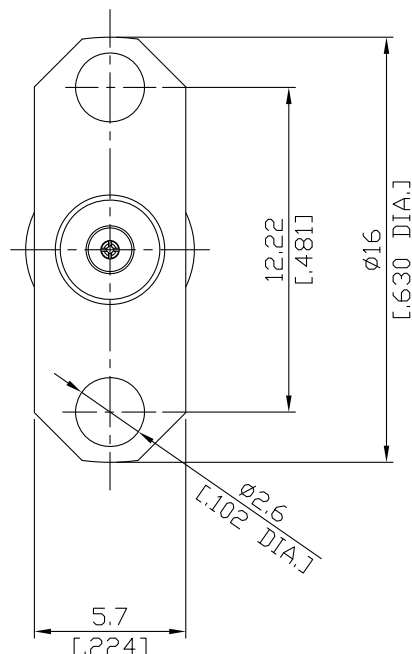
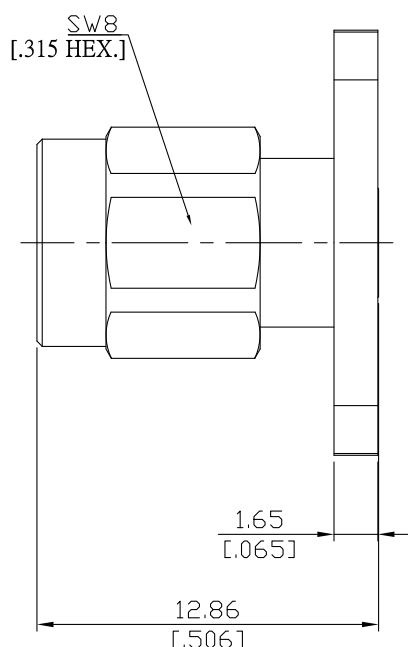


2.92mm Plug (male) Connector 2 Straight Field Replaceable  
12.22mm (.481 inch) Hole Spacing DC-40GHz VSWR1.15

**K1BT50-0012A / 9XX**



All dimensions are in mm [inch]

Tolerances according to DIN ISO 2768-mH

**Interface**

According to

IEC 61169-35

**Electrical Data**

Impedance

50 Ω

Frequency

DC to 40 GHz

VSWR (Return Loss)

DC to 27 GHz:

≤ 1.10 (≥ 26.44 dB)

27 GHz to 40 GHz:

≤ 1.15 (≥ 23.13 dB)

Insertion Loss

≤ 0.3 dB

Insulation Resistance

≥ 5 GΩ

Center Contact Resistance

≤ 3.0 mΩ

Outer Contact Resistance

≤ 2.0 mΩ

Test Voltage

750 V rms

Working voltage

250 V rms

RF-leakage

≥ 100 dB up to 1 GHz

**Material And Plating**

Piece Parts	Material	Plating
Centre contact	Beryllium Copper	Gold plating, 3 μinch (Non-magnetic nickel-phosphorus underplating, 80 μinch)
Body	Stainless Steel	Passivated
Insulator	PEI/PTFE	
Gasket	Silicone Rubber	
Coupling nut	Stainless Steel	Passivated

2.92mm Plug (male) Connector 2 Straight Field Replaceable  
12.22mm (.481 inch) Hole Spacing DC-40GHz VSWR1.15

## K1BT50-0012A / 9XX

### Mechanical Data

Coupling mechanisms	Screw-lock
Mating Cycles	≥ 500
Captivated Type	Mechanical
Center Contact Captivation: axial	≥ 20 N
Coupling Test Torque	1.70 Nm
Recommended Torque	0.80 Nm to 1.10 Nm

### Environmental Data

Temperature Range	-65°C to +155°C
Thermal shock	MIL-STD-202, Meth. 107, Cond. B
Corrosion	MIL-STD-202, Meth. 101, Cond. B
Vibration	MIL-STD-202, Meth. 204, Cond. D
Shock	MIL-STD-202, Meth. 213, Cond. I
Moisture Resistance	MIL-STD-202, Meth. 106
RoHS	compliant

### Packing

Single or 100